

PRODUCT MODELS (North America & Europe)

- Evolution cover
- Oasis Cover

PURPOSE OF THE REPAIR PROCEDURE

This repair procedure should be performed if the capacitor needs to be replaced on the Evolution or Oasis spa cover.

PREPARATION

- Gather the required tools, as seen in the table at right.
- Make sure the parts kit is complete and that parts have not been damaged during transport. Call your local dealer if parts need to be replaced.

TOOLS REQUIRED

Flat blade screwdriver	Phillips screwdriver
Cutting pliers	Ear clamp pliers
	Long nose pliers

PARTS KIT NO. 221430 (North America)

1 x Capacitor	2 x Pinch clamp
1 x Mounting bracket	2 x 6-32 x 3/8" Screw

PARTS KIT NO. 221415 (Europe)

1 x Capacitor	2 x Cable tie
2 x Capacitor support	2 x 6-32 x 3/8" Screw

Version française à la page 4.

⚠ CAUTION

Do not use power tools, some parts are fragile and may break under too much torque.

⚠ WARNING

This procedure must be performed by a certified Covana installer.

STEP BY STEP PROCEDURE

NORTH AMERICAN MODEL

A- REMOVING THE DEFECTIVE CAPACITOR

⚠ WARNING

Cut power off at the breaker panel.

- 1) Remove the four screws holding the operator cover in place. Lift the cover and set it aside.

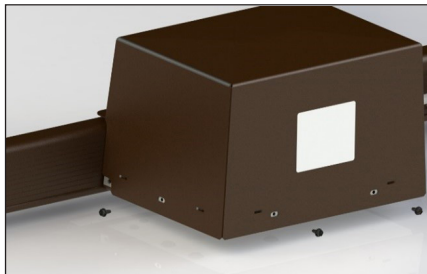


IMAGE 1

- 2) Using cutting pliers, remove both pinch clamps holding the defective capacitor in place.

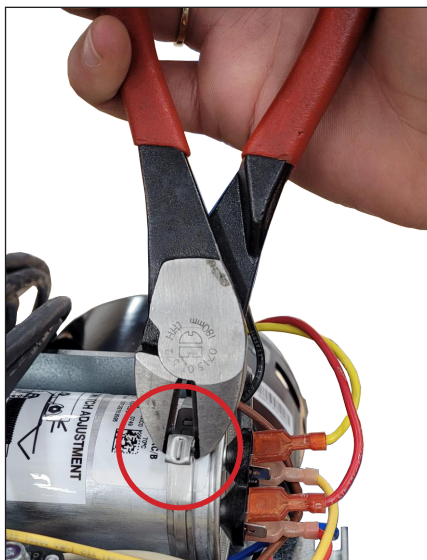


IMAGE 2

- 3) Disconnect the four wires from the capacitor; 1 red and 1 yellow going to the motor, and 1 red and 1 yellow going to the limit switches. Discard the defective capacitor and pinch clamps.

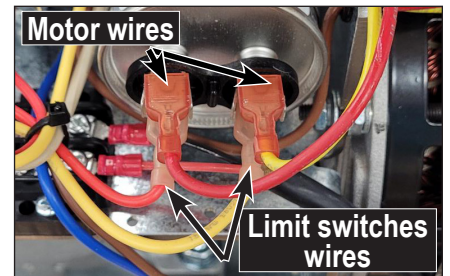


IMAGE 3

Note where the wires are connected to make it easier to reconnect them later on.

- 4) Remove both screws holding the capacitor mounting bracket in place.

NOTE

If the current mounting bracket is still in good condition, it can be left in place to be used with the new capacitor.

- 5) Discard the mounting bracket and screws.

**EUROPEAN
PROCEDURE
ON PAGE 3**

B- INSTALLING THE NEW CAPACITOR

- 1) Install the new mounting bracket using both 6-32 x 3/8" screws.
- 2) To properly hold the new capacitor in place, both pinch clamps need to be adjusted to their smallest size:

Using long nose pliers, unhook the tab.



IMAGE 4

Then, adjust the pinch clamp to the closest tab.



IMAGE 5

Secure the position by pinching the pinch clamp with the pliers as illustrated at right.



IMAGE 6

- 3) Place the new capacitor on the mounting bracket, ensuring its position matches the final assembly illustrated at right.

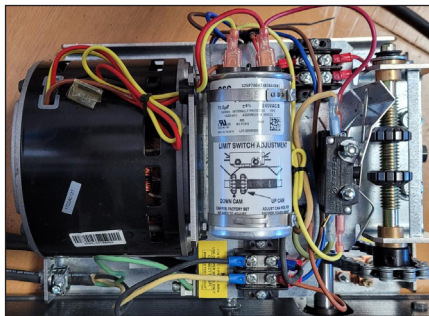


IMAGE 7

- 4) Slide a pinch clamp at each end of the capacitor, making sure they go underneath the bracket flange.

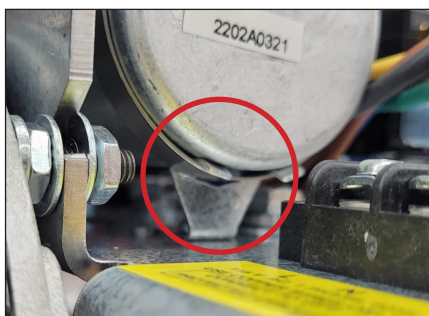


IMAGE 8

- 5) Using ear clamp pliers, grab the indents of both sides of the ear, then squeeze the tool. Pinch as tight as possible without damaging the clamp. Repeat for the other pinch clamp.



IMAGE 9

- 6) Connect the four wires to the new capacitor; 1 red and 1 yellow coming from the motor, and 1 red and 1 yellow coming from the limit switches (see image 10).

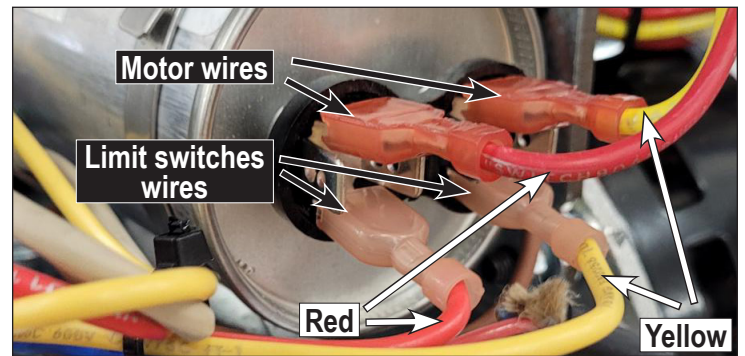


IMAGE 10

- 7) Place the cover back on the operator and secure in place with the previously removed screws (see image 1).
- 8) Put the power back on and the key in the key switch socket. Operate the spa cover normally to see if everything is correct. If there is any issue with the cover, please refer to the troubleshooting section of the Owner's manual or call Covana for the Technical Support department.

STEP BY STEP PROCEDURE

EUROPEAN MODEL

A- REMOVING THE DEFECTIVE CAPACITOR

⚠ WARNING

Cut power off at the breaker panel.

- 1) Remove the four screws holding the operator cover in place. Lift the cover and set it aside.

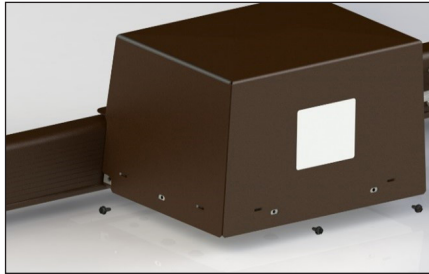


IMAGE 10

- 2) Using cutting pliers, remove both cable ties holding the defective capacitor in place.

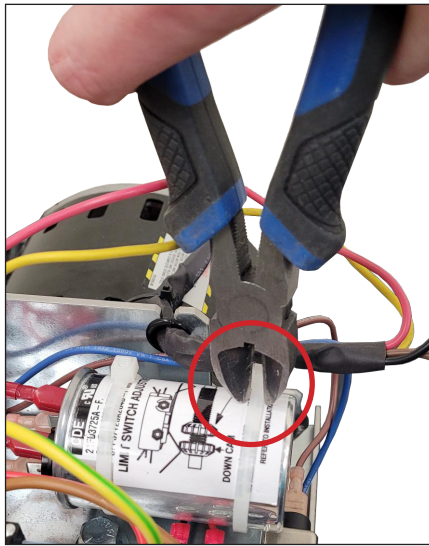


IMAGE 11

- 3) Disconnect the four wires from the capacitor; 1 red and 1 yellow going to the motor, and 1 red and 1 yellow going to the limit switches. Discard the defective capacitor and cable ties.

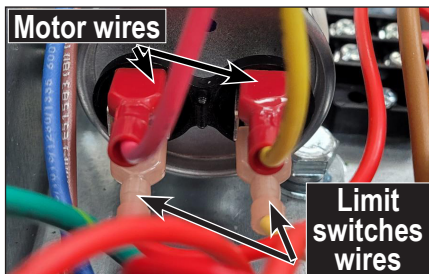


IMAGE 12

Note where the wires are connected to make it easier to reconnect them later on.

- 4) Remove the screw holding each capacitor support in place.

NOTE

If the current supports are still in good condition, they can be left in place to be used with the new capacitor.

- 5) Discard the supports and screws.

B- INSTALLING THE NEW CAPACITOR

- 1) Install the new supports using both 6-32 x 3/8" screws.

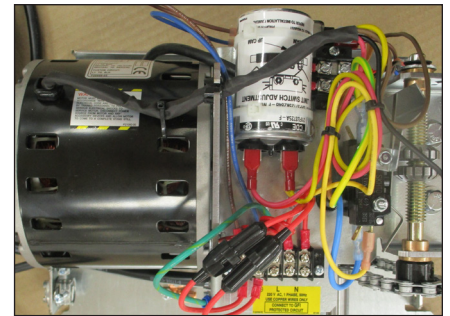


IMAGE 13

- 2) Place the new capacitor on the supports, ensuring its position matches the final assembly illustrated at right.



IMAGE 14

- 3) Slide a cable tie at each end of the capacitor, making sure they go through the supports.

- 4) Tighten the cable tie as tight as possible. Repeat for the other cable tie. Cut off the excess.

- 5) Connect the four wires to the new capacitor; 1 red and 1 yellow coming from the motor, and 1 red and 1 yellow coming from the limit switches (see image 15).

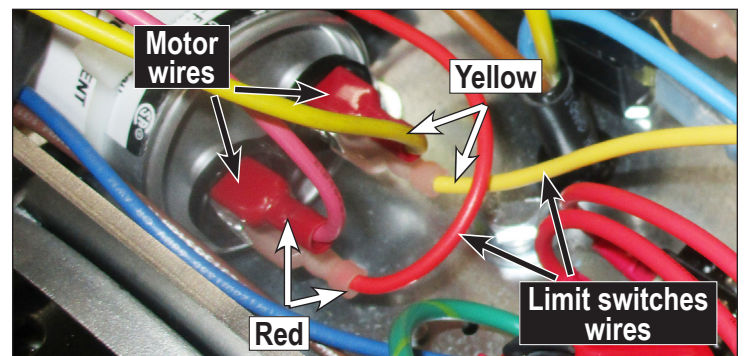


IMAGE 15

- 6) Place the cover back on the operator and secure in place with the previously removed screws (see image 1).

- 7) Put the power back on and the key in the key switch socket. Operate the spa cover normally to see if everything is correct. If there is any issue with the cover, please refer to the troubleshooting section of the Owner's manual or call Covana for the Technical Support department.