

PRODUCT MODELS

- Evolution cover
- Oasis Cover

PURPOSE OF THE REPAIR PROCEDURE

This repair procedure should be performed if the limit shaft assembly needs to be replaced on the Evolution or Oasis spa cover.

PREPARATION

- Gather the required tools, as seen in the table at right.
- Make sure the parts kit is complete and that parts have not been damaged during transport. Call your local dealer if parts need to be replaced.

TOOLS REQUIRED

Flat blade screwdriver	1/8" Allen key
Locking pliers (<i>Vise-Grip</i>)	

PARTS KIT NO. 226541

1 x Limit shaft	1 x O-ring
2 x Bushing	2 x External 3/8" retaining ring
2 x Threaded cam wheel	1 x Cam plate
3/8" Flat washer	1 x 8-32 x 3/8" Screw

Version française à la page 3.

⚠ CAUTION

Do not use power tools, some parts are fragile and may break under too much torque.

⚠ WARNING

This procedure must be performed by a certified Covana installer.

STEP BY STEP PROCEDURE

A- REMOVING THE DEFECTIVE LIMIT SHAFT

⚠ WARNING

Cut power off at the breaker panel.

- 1) Remove the four screws holding the operator cover in place. Lift the cover and set it aside.

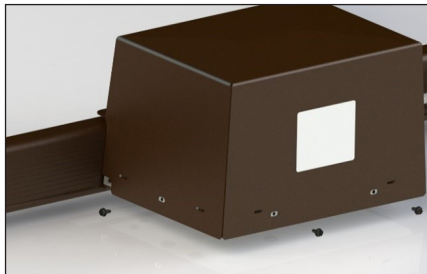


IMAGE 1

- 2) Remove the retaining screw and slide the cam plate out of the operator frame (see image 2). Discard the screw and the cam plate.

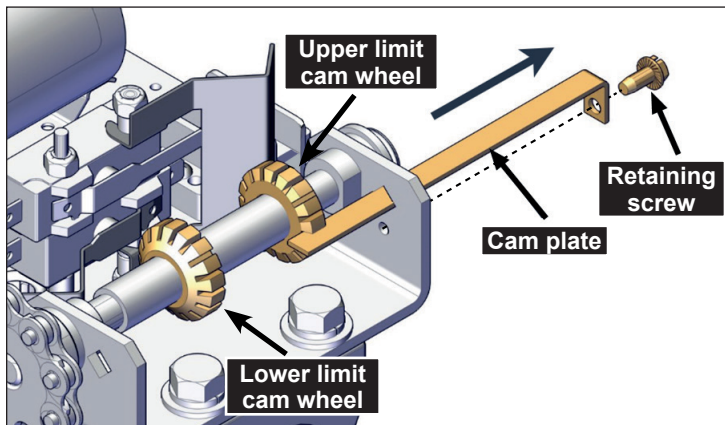


IMAGE 2

- 3) Unscrew both screws located on the sprocket. Set the sprocket, screws, and chain aside.

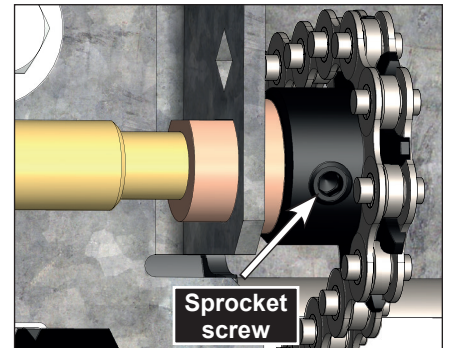


IMAGE 3

- 4) Unscrew both threaded cam wheels towards the side of the sprocket, then pull the limit shaft out towards the opposite side. Discard the wheels and the shaft.

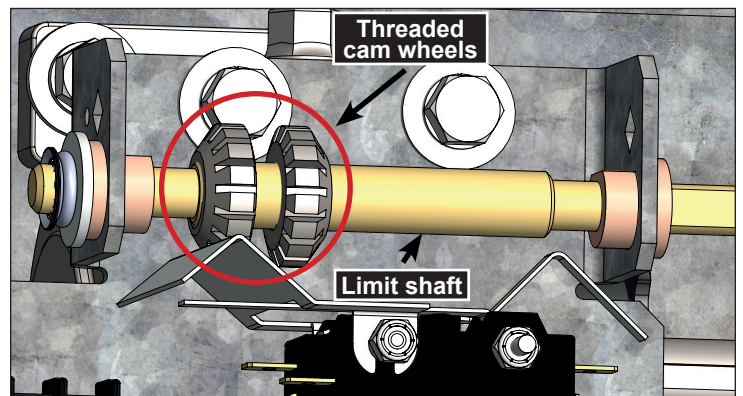


IMAGE 4

B- INSTALLING THE NEW LIMIT SHAFT

ID	DESCRIPTION
A	Bushing
B	Limit cam wheels
C	3/8" Flat washer
D	O-ring
E	External retaining rings
F	Limit shaft
G	Cam plate
H	8-32 x 3/8" Screw

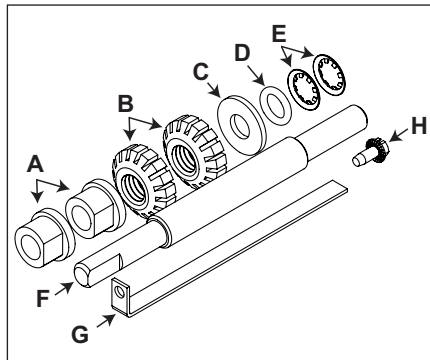


IMAGE 5

1) Insert one end of the new limit shaft (F in image 5) through one of the holes of the bracket.

2) Screw both threaded cam wheels on the limit shaft until centered, then insert the other end of the limit shaft through the remaining hole of the bracket.

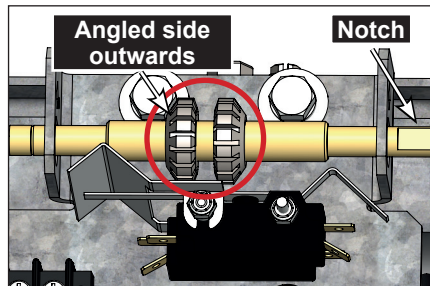


IMAGE 6

3) Install a bushing at each end of the limit shaft.

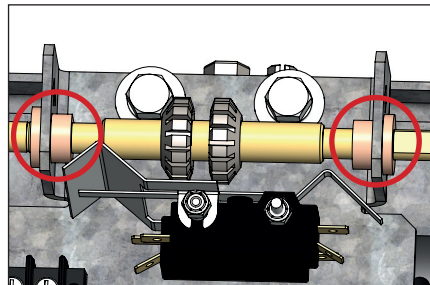


IMAGE 7

4) Reinstall the sprocket and chain using the previously removed screws (see images 3 and 8).

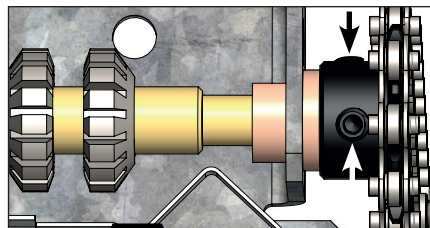


IMAGE 8

5) Place the flat washer, followed by the O-ring, then both retaining rings on the limit shaft (opposite side of the sprocket).

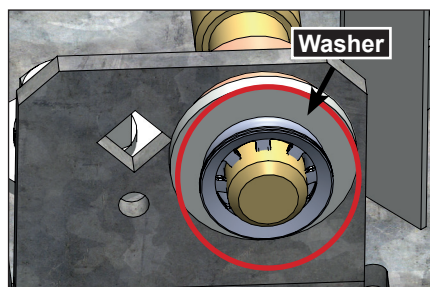
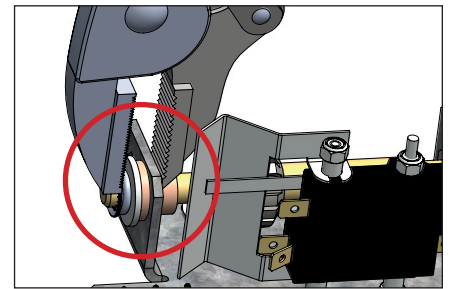


IMAGE 9



Use locking pliers (Vise-Grip pliers) to secure in place.

IMAGE 10

C- SETTING THE LOWER AND UPPER LIMITS

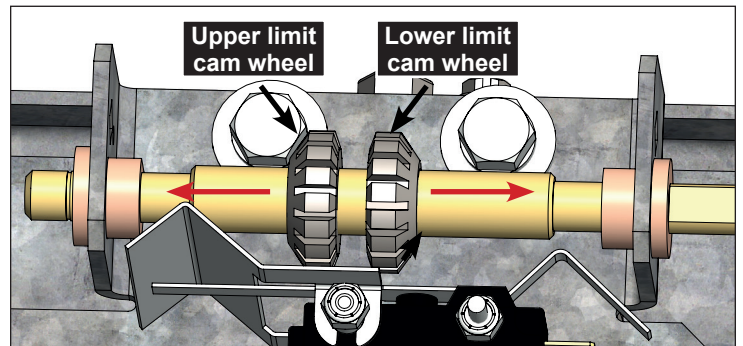


IMAGE 11

1) While the cover is lowered on the spa, screw the lower limit cam wheel towards the chain (see image 11) until a faint click is heard.

⚠ CAUTION
Stop as soon as the click is heard. Pay close attention because the click is very faint.

- 2) Use the cam plate and screw (or tape) to temporarily lock the cam wheels.
- 3) Put the power back on and raise the cover to the desired height. TRAVEL MUST NOT EXCEED 48" as this could damage the system.

⚠ WARNING
Cut power off at the breaker panel and remove the cam plate.

- 4) Screw the upper limit cam wheel away from the chain (see image 11) until a faint click is heard.
- 5) Reinstall the cam plate and screw (see image 2) being very careful NOT TO MOVE THE CAM WHEELS.
- 6) Put the power back on. Lower, raise, and lower the cover to make sure the limit cam wheels have been adjusted properly.

⚠ WARNING
Pay close attention when raising the cover just in case the upper limit cam wheel has not been adjusted properly.

7) Place the cover back on the operator and secure in place with the previously removed screws (see image 1).