

### PRODUCT MODELS

- C-EP Cover
- Evolution Cover
- Legend / LegendX Cover
- Oasis Cover

### PURPOSE OF THE REPAIR PROCEDURE

This repair procedure should be performed when the seal needs to be replaced on any COVANA spa cover.

### PREPARATION

- Raise the cover to a comfortable working height.
- Gather the required tools, as seen in the table at right.

*Version française à la page 4.*

- Make sure the parts kit is complete and that parts have not been damaged during transport. Call your local dealer if parts need to be replaced.

#### TOOLS REQUIRED

J-Roller with rubber roller	Non-abrasive cleaning pad
Isopropyl alcohol (IPA)	

#### PARTS KIT

	CODE
1" Seal (length according to cover model)	N/A
Foam spacers (quantity according to cover model)	234408
Mounting clips (quantity according to cover model)	204246
Seal connector (x1)	207082
Masking tape (x1)	213357

### ⚠ CAUTION

It is recommended to remove/install the seal when the ambient temperature is above 50 °F (10 °C).

Before removing/installing the seal, it is strongly recommended to reduce the water vapor steam generated by the spa. To do this; stop the agitation of the water by turning off the recirculation pump, and then set the temperature of the spa water to be between 2 and 5 degrees under the ambient temperature. Wait until the water has reached the ambient temperature or use a plastic canvas to stop the vapor steam.

### ⚠ WARNING

This procedure must be performed by a certified Covana installer.

Keep the key out of the key switch socket at all times. The certified Covana installer must keep control of the key during the repair procedure. Derogation from this directive could cause serious injury or damage the cover.

### STEP BY STEP PROCEDURE

#### A- INSTALLING THE FOAM SPACERS

To ensure the correct height of the cover and to protect the spa and innershell during the seal replacement procedure, install the provided foam spacers on the top of the spa using the masking tape to keep them in place. Do not stack the foam spacers.

### ⚠ CAUTION

The foam spacers must be installed on the flat top surface of the spa.

Evolution & Oasis covers

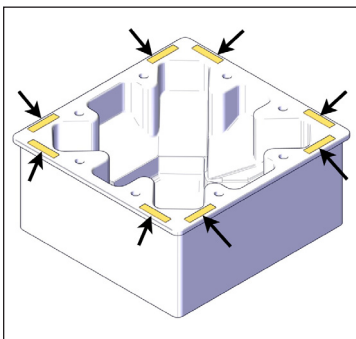


IMAGE 1

C-EP & Legend covers

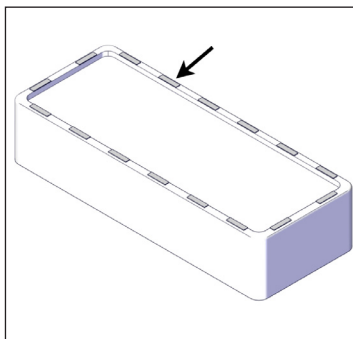


IMAGE 2

#### B- REMOVING THE DEFECTIVE SEAL

### NOTE

The easiest, fastest, and cleanest way to remove the seal is to pull it **horizontally** starting at one end.

- 1) Slide your fingers in the seal joint (A) and pull on the seal connector (B) holding both ends of the seal together (see image 3).

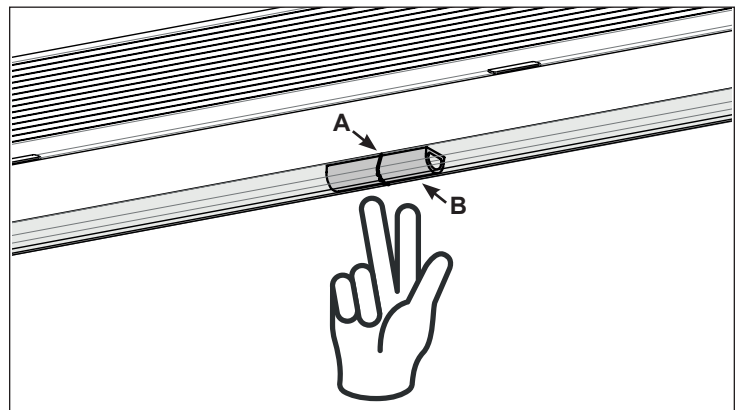


IMAGE 3

- 2) Pull **horizontally** on one end of the seal. Keep on going for the whole length of the seal; it should come off easily.
- 3) Clean the glue residue left on the cover with isopropyl alcohol (IPA) and a non-abrasive cleaning pad. Any residue could interfere with the seal installation procedure.

## C- INSTALLING THE NEW SEAL

**⚠ CAUTION**

The recommended tool to install the seal properly is a J-Roller with rubber roller (Covana part no. 239693), see image 4.

Covana is not responsible for any misuse of the tool and any damage done to the spa or the cover while using the roller.

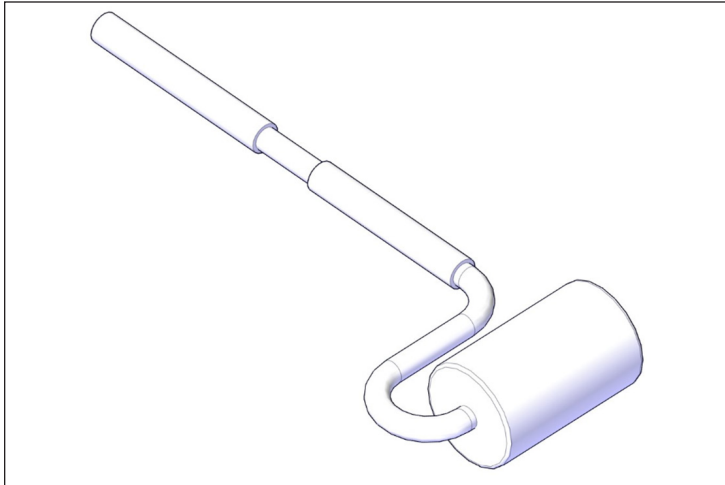


IMAGE 4

- 1) Lower the cover and walk around the entire perimeter of the spa. Check where the inside surface of the cover makes contact with the foam spacers to make sure the height has not changed, and that there are no gaps or foam spacers that are being crushed. If so, refer to the owner's manual to address the problem.
- 2) Once the height is correct, raise the cover and remove the foam spacers and tape.
- 3) Dry the spa top edges and the underside of the cover with a clean cloth.

**⚠ CAUTION**

The spa top edges must be 100% dry and clean. Use isopropyl alcohol (IPA) if necessary.

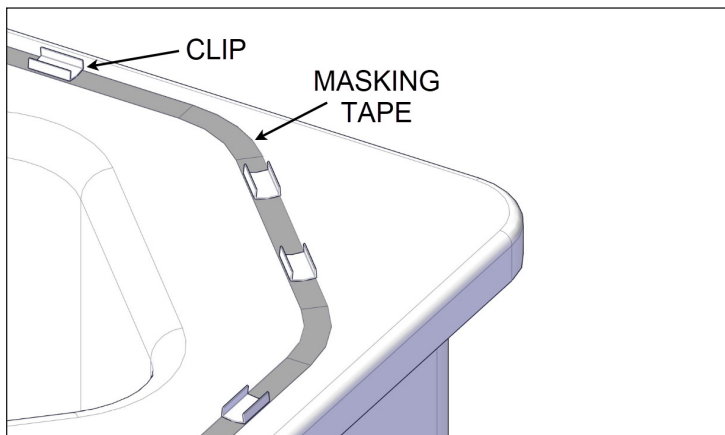


IMAGE 5

**⚠ CAUTION**

The use of masking tape is recommended since it will protect the spa acrylic from the clip glue. Furthermore, pulling the masking tape from one corner to the next will ensure straightness.

Install the masking tape in the best possible location according to the contact surface between the cover and the top edge of the spa.

- 4) The number of seal clips is limited. Temporarily install the clips all around the spa to ensure the best distribution (do not stick yet). The minimum turn radius for the seal is 4" (10 cm), see image 5. Keep two clips for the seal joint connector as shown in image 6. Once the distribution is done, stick the clips in place (on the tape if applied).
- 5) The seal joint starts on the opposite side of the spa entrance. Install two clips where the seal joint connector will be located, see image 6.

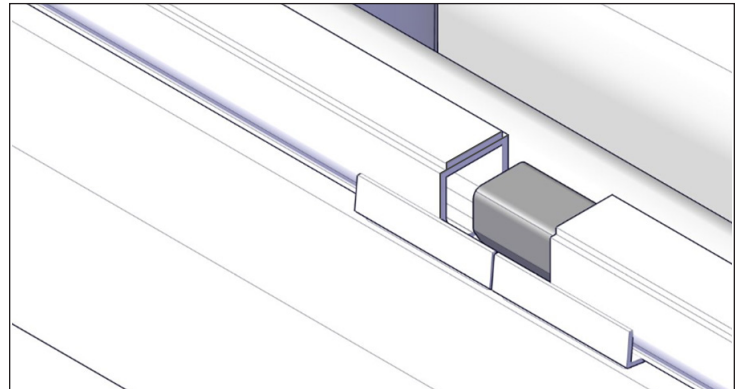


IMAGE 6

- 6) Start installing the seal joint with the adhesive layer facing up towards the cover, see images 6 and 7.

**⚠ CAUTION**

Do not install the seal joint near a control system or the critical components of the spa.

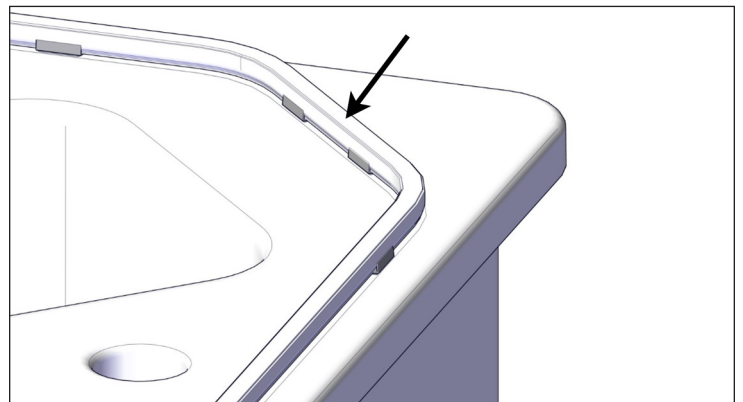


IMAGE 7

- 7) Once the seal is installed in the clips around the entire spa, cut the extra length as straight as possible for the best joint finishing results.
- 8) Insert the supplied seal connector in both ends of the seal. The use of masking tape to hold the ends is recommended.

### ⚠ CAUTION

At this point, if there is no water in the spa and the ambient air temperature is below 50 °F (10 °C), a temporary heater must be installed inside the spa for 10 to 15 minutes.

Once the heater is in the spa, lower the cover until it touches the seal to increase the air temperature.

While generating heat, regularly check interior air temperature and do not let it reach temperatures above 104 °F (40 °C). After 10 to 15 minutes, remove the heater and continue with the seal installation.

The rubber seal should not be overheated. Do not directly heat the acrylic or seal, as this may cause permanent damage.

Do not install the heater too close to the acrylic surface, as the surface could melt or catch on fire.

Install the heater on a pedestal or spacers so it will not rest directly on the acrylic of the spa.

Make sure that the air temperature in the spa is still between 68 °F and 104 °F (20 °C and 40 °C) before proceeding to the next steps.

Remove all dirt, oil residues and moisture from the underside of the cover for proper seal adhesion, especially in wet spa installations. The use of mild detergent can help clean the surface.

Make sure the seal stays tight in the clips to ensure its proper positioning.

- 9) Test the seal placement by lowering the cover about 1/4" (6 mm) over the seal to ensure that the entire perimeter will make contact with the seal. If you are satisfied, raise the cover and remove the red plastic backing off the seal.
- 10) Completely lower the cover onto the seal. Leave the cover in this position for at least 5 minutes to ensure a proper seal-to-cover adhesion.
- 11) Slowly lift up the cover no more than 1/4" (6 mm) and leave the cover in this position for about 10 seconds, as this will allow the seal to slowly and fully release from the seal clips. You can also use a non-abrasive plastic tool or your fingers to help release the seal from the clips.
- 12) Once satisfied that the seal is released, lift up the cover 36" (91 cm) high. Apply a minimal pressure of 15 psi (103 kPa) on the seal with the roller as shown in image 8 to properly bond the adhesive to the underside of the cover.

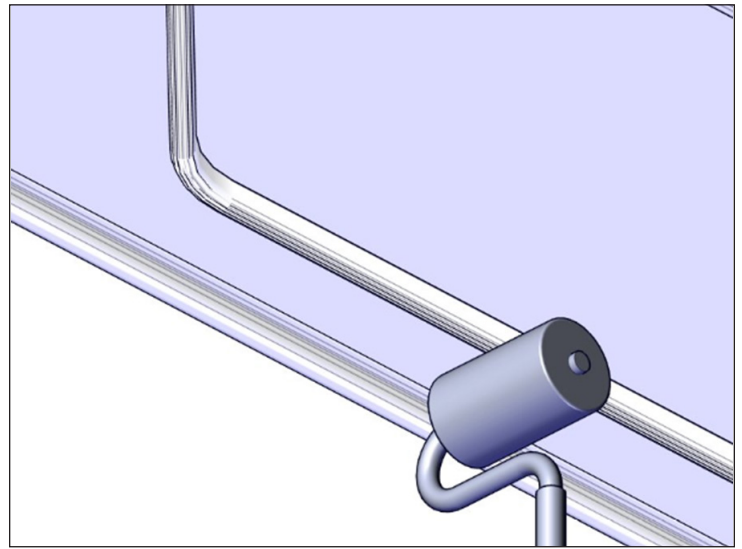


IMAGE 8

- 13) Remove all seal clips and tape (if applied) from the spa top edges.
- 14) Lower the cover and stop at approximately 6" (15 cm) from the spa top edges.
- 15) Make sure the cover is flat with all corners at the same height.
- 16) Lower the cover, and make sure the seal is touching the spa all around.
- 17) Completely lower the cover and leave it closed for **at least 24 hours**. This will ensure the seal is properly bonded to the cover surface. The heater can be put back in place if necessary.