

PRODUCT MODELS (North America & Europe)

- Evolution cover
- Oasis Cover

PURPOSE OF THE REPAIR PROCEDURE

This repair procedure should be performed if the key switch assembly needs to be replaced on the Evolution or Oasis spa cover.

PREPARATION

- Gather the required tools, as seen in the table at right.
- Make sure the parts kit is complete and that parts have not been damaged during transport. Call your local dealer if parts need to be replaced.

TOOLS REQUIRED

Flat blade screwdriver	Phillips screwdriver
------------------------	----------------------

PARTS KIT NO. 192874 or 244783 (NORTH AMERICA) NO. 203105 (EUROPE)

1 x Key switch	1 x Rubber cap
1 x Harness	2 x Key

Version française à la page 3.

⚠ CAUTION

Do not use power tools, some parts are fragile and may break under too much torque.

⚠ WARNING

This procedure must be performed by a certified Covana installer.

STEP BY STEP PROCEDURE

A- REMOVING DEFECTIVE KEY SWITCH ASSEMBLY

⚠ WARNING

Cut power off at the breaker panel.

- 1) Remove the four screws holding the operator cover in place. Lift the cover and set it aside.

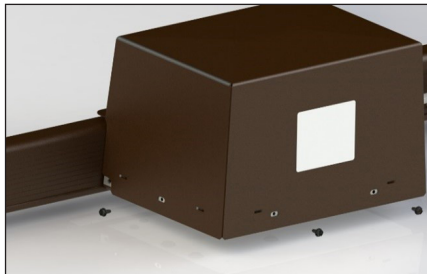


IMAGE 1

2) North American model:

Disconnect the black, white, and green wires (see image 2-A).

Note where the wires are connected to make it easier to reconnect them later on.

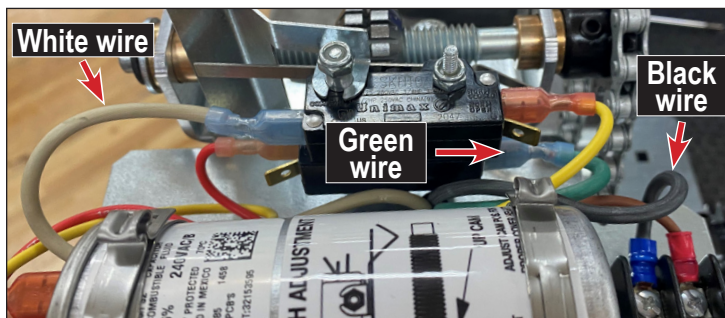


IMAGE 2-A

European model:

Disconnect the blue, green-yellow, and brown wires (see image 2-B).

Note where the wires are connected to make it easier to reconnect them later on.

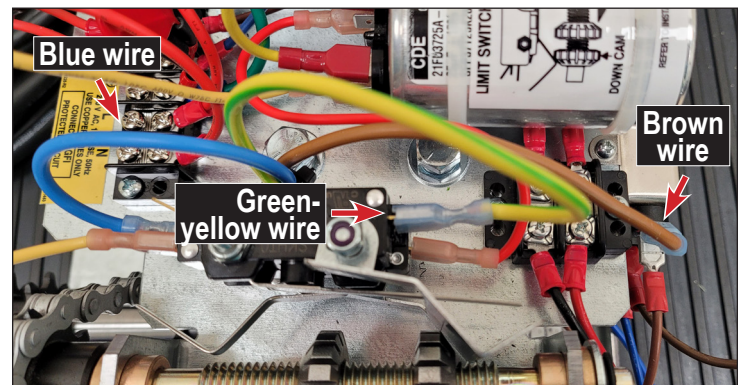


IMAGE 2-B

3) All models:

Loosen both screws from the metal compression connector.

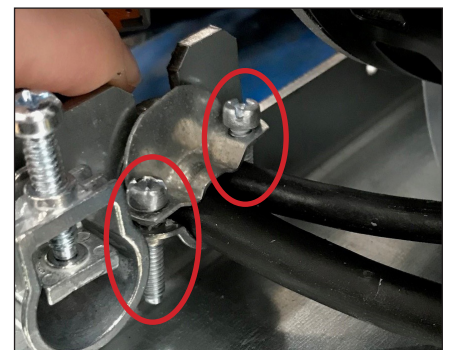


IMAGE 3

- 4) Pull the black cable out of the operator.

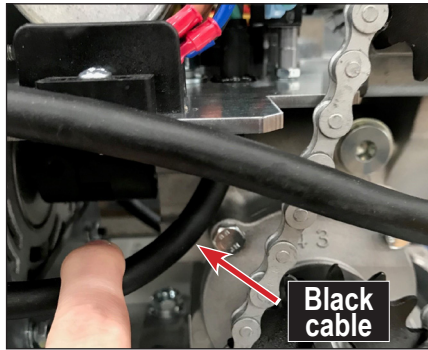


IMAGE 4

⚠ WARNING

Do not disconnect any other wires.

- 5) Remove the cover of the defective key switch by unscrewing both screws using a Phillips screwdriver.



IMAGE 5

- 6) Remove the screws (two or four depending on the model) at the back of the key switch casing to remove the defective key switch assembly from its permanent location.

Discard the defective key switch assembly.

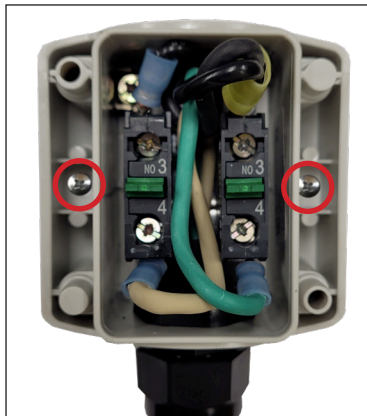


IMAGE 6

B- INSTALLING NEW KEY SWITCH ASSEMBLY

- 1) Insert the cable of the new key switch assembly in the operator making sure to run it through the cable connector.
- 2) Tighten both screws of the cable connector (see image 3).
- 3) Connect the wires as illustrated in image 2-A or 2-B.
- 4) Remove the cover of the new key switch by unscrewing both screws using a Phillips screwdriver (see image 5).

⚠ WARNING

Ensure the wires are securely connected in the key switch.

- 5) Fasten the key switch casing to its permanent mounting location using the previously removed screws (two or four depending on the model) (see image 6).

⚠ DANGER

The key switch must be permanently mounted and located 5 ft away from the spa and 5 ft above the deck or ground level. This ensures the user has a clear view of the cover when operating it. Furthermore, the key switch terminal should be located in a location where no water downpour or debris could fall on it.

Failure to properly install the key switch according to these instructions could result in injury or even death.

- 6) Place the cover back on the key switch and secure in place using both Phillips screws making sure not to pinch the wires underneath.
- 7) Place the cover back on the operator and secure in place using the previously removed screws (see image 1).
- 8) Put the power back on and the key in the key switch socket. Operate the spa cover normally to see if everything is correct. If there is any issue with the cover, please refer to the troubleshooting section of the Owner's manual or call Covana for the Technical Support department.
- 9) Install the rubber cap on the key switch.