

### PRODUCT MODELS

- C-EP Cover
- Legend and LegendX Covers

### PURPOSE OF THE REPAIR PROCEDURE

This repair procedure should be performed if the replacement of the motor is required on the C-EP, Legend or LegendX swim spa cover.

### PREPARATION

- Gather the required tools, as seen in the table at right.
- Make sure the parts kit is complete and that parts have not been damaged during transport. Call your local dealer if parts need to be replaced.

### TOOLS REQUIRED

No. 2 Phillips screwdriver	4 lb. hammer
8" long taper punch, 1/8" diameter	

### PARTS KIT NO. 242621

	QTY	CODE
24 V Motor (-40) assembly	1	209306
28 mm long slotted spring pin, 6 mm diameter	1	205438
"Post replacement" procedure	1	233193

*Version française à la page 3.*

## ⚠ CAUTION

Do not use power tools, some parts are fragile and may break under too much torque.

## ⚠ WARNING

This procedure must be performed by a certified Covana installer.

Cut power to the cover before starting this procedure and keep the key out of the key switch socket at all times. The certified Covana installer must keep control of the key during the repair procedure. Derogation from this directive could cause serious injury or damage the cover.

### STEP BY STEP PROCEDURE

## NOTE

Before performing this procedure, execute procedure no. 233193 to disassemble the post assembly.

#### A- DISASSEMBLING DEFECTIVE MOTOR FROM JACK

- 1) Place the 8" long taper punch on the pin. Hit the punch with the hammer until the pin gets out from the bottom of the jack (see image 1).
- 2) Use the no. 2 Phillips screwdriver to remove the four no. 10-24 x 1/2" thread-cutting screws from both sides of the jack (see image 2).

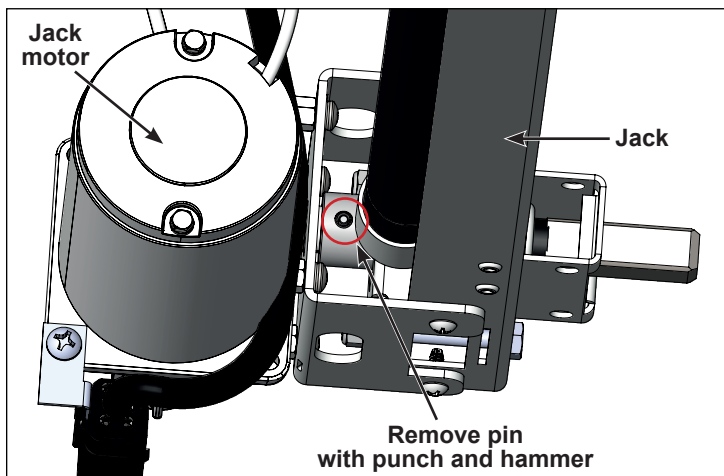


IMAGE 1

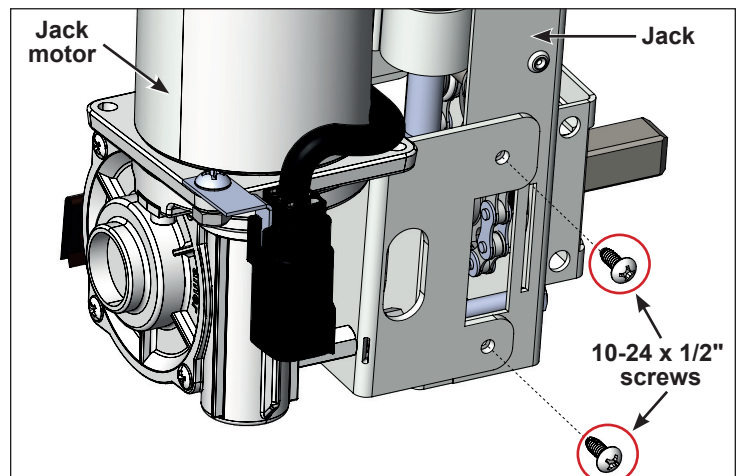


IMAGE 2

- 3) Remove the motor assembly from the jack (see image 3).

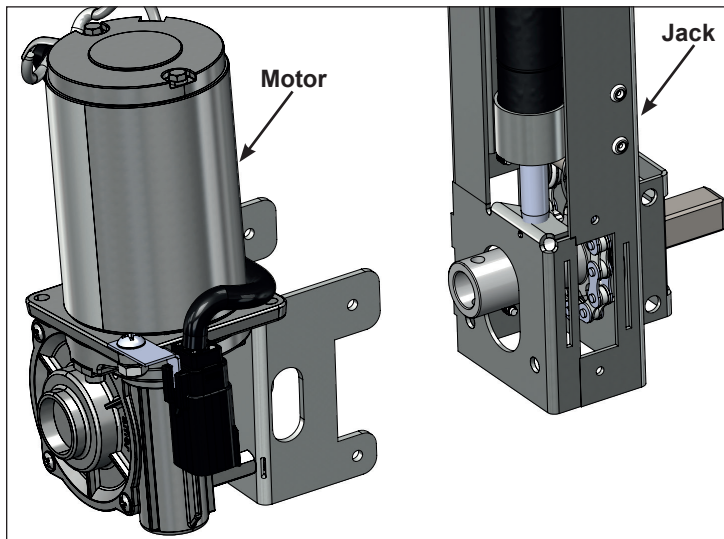


IMAGE 3

### B- ASSEMBLING NEW MOTOR TO JACK

- 1) Insert the new motor assembly on the jack making sure both pin holes on the jack and motor shafts are aligned (see image 4).
- 2) Use the 8" long taper punch and the hammer to hit on the slotted spring pin to insert it in place (see image 4).

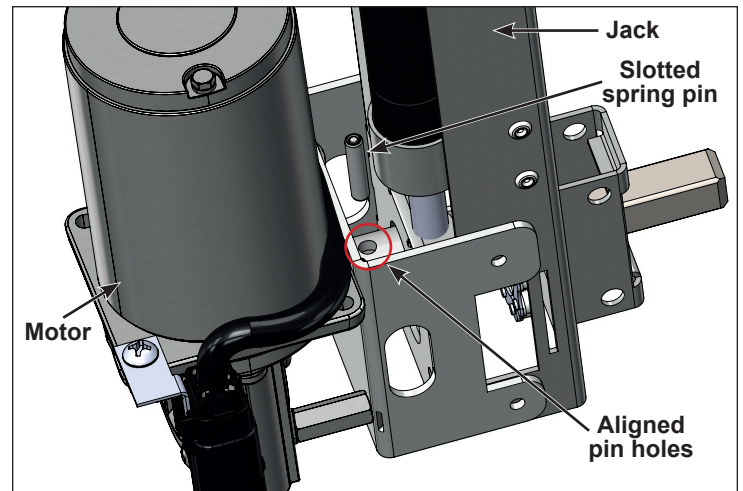


IMAGE 4

- 3) Use the no. 2 Phillips screwdriver to install the four no. 10-24 x 1/2" thread-cutting screws on both sides of the jack (see image 2).
- 4) Refer to procedure no. 233193 related to the post replacement of the cover or follow the lifting mechanism assembly process in the Owner's manual to assemble the motor jack to the spa. If there is any issue with the cover, please refer to the troubleshooting section of the Owner's manual or call Covana for the Technical Support department.

## IMPORTANT

Close the cover and reinstall the all-weather seals in their original position; i.e., in contact with the outer sleeve of every post.