

PRODUCT MODELS (North America & Europe)

- Oasis cover

PURPOSE OF THE REPAIR PROCEDURE

This repair procedure should be performed if the power supply needs to be replaced on the Oasis spa cover.

PREPARATION

- Gather the required tools, as seen in the table at right.
- Make sure the parts kit is complete and that parts have not been damaged during transport. Call your local dealer if parts need to be replaced.

TOOLS REQUIRED

Phillips <i>stubby</i> screwdriver	Phillips screwdriver	Flat blade screwdriver
------------------------------------	----------------------	------------------------

PARTS KIT NO. 226534 (North America)

1 x 12 V Power supply	4 x Fork terminal connector
1 x Double sided tape	

PARTS KIT NO. 226535 (Europe)

1 x 12 V Power supply	2 x Fork terminal connector
1 x Double sided tape	2 x Piggyback connector

Version française à la page 4.

⚠ CAUTION

Do not use power tools, some parts are fragile and may break under too much torque.

⚠ WARNING

This procedure must be performed by a certified Covana installer.

STEP BY STEP PROCEDURE

NORTH AMERICAN MODEL

A- REMOVING THE DEFECTIVE POWER SUPPLY

⚠ WARNING

Cut power off at the breaker panel.

- 1) Remove the four screws holding the operator cover in place. Lift the cover and set it aside.

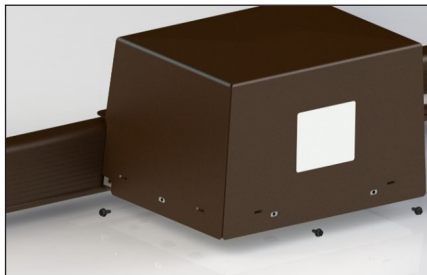


IMAGE 1

- 2) Remove both screws holding the defective power supply in place. The use of a *stubby* screwdriver might come in handy.



IMAGE 2

- 3) Loosen the four screws to disconnect the power supply wires; 1 red and 1 black from the terminal block above the power supply, and 1 blue and 1 brown from the terminal block near the yellow sticker (see image 3).

Note where the wires are connected to make it easier to reconnect them later on.

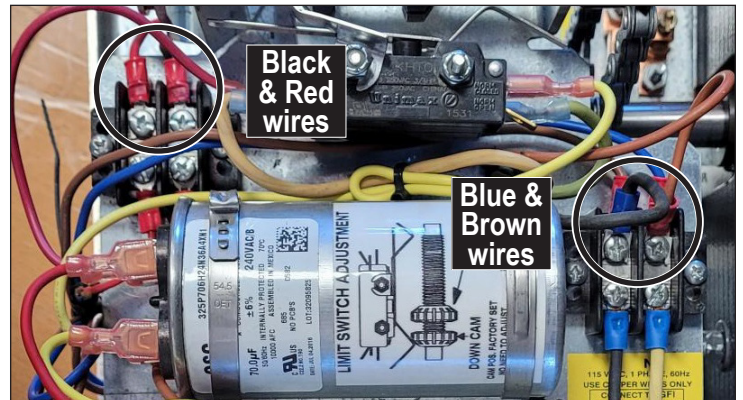


IMAGE 3

- 4) Discard the defective power supply and screws.

**EUROPEAN
PROCEDURE
ON PAGE 3**

B- INSTALLING THE NEW POWER SUPPLY

- 1) Install the new power supply using the supplied double-sided adhesive tape, as reinstalling the previously removed screws might be difficult. Make sure it is aligned (or so) with the screw holes and that the blue and the brown wires are on the same side as the motor (see image 4).

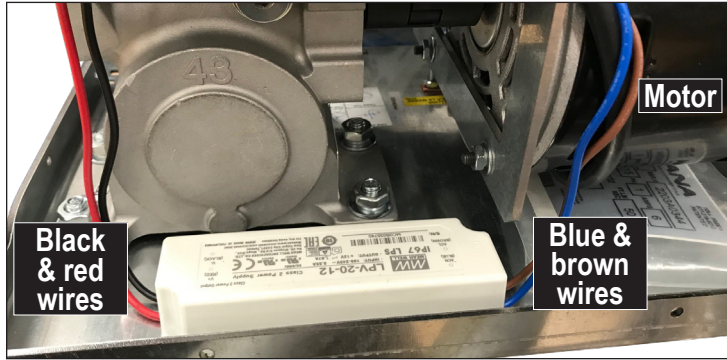


IMAGE 4

- 2) Slightly bend the new power supply fork terminal connectors. Then, connect the four wires; 1 red and 1 black to the terminal block above the power supply, and 1 blue and 1 brown to the terminal block near the yellow sticker (see images 5 and 6). Tighten the four screws.

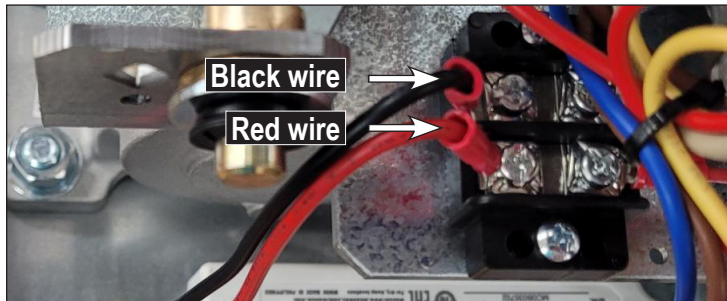


IMAGE 5

⚠ CAUTION

Connect the blue wire to the "N" side, and the brown wire to the "L" side. **DO NOT REVERSE!**

Make sure both wires underneath remain in place and are firmly secured with the screws.

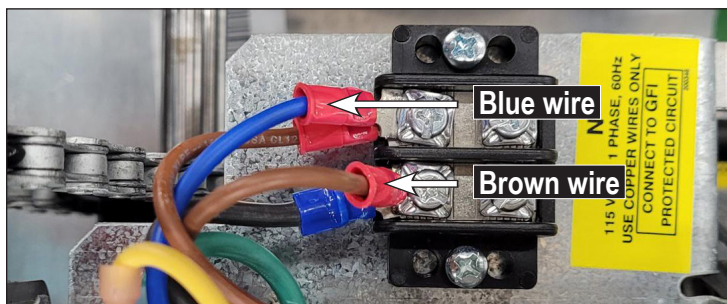


IMAGE 6

- 3) Place the cover back on the operator and secure in place with the previously removed screws (see image 1).

- 4) Put the power back on and the key in the key switch socket. Operate the spa cover normally to see if everything is correct. If there is any issue with the cover, please refer to the troubleshooting section of the Owner's manual or call Covana for the Technical Support department.

STEP BY STEP PROCEDURE

EUROPEAN MODEL

A- REMOVING THE DEFECTIVE POWER SUPPLY



Cut power off at the breaker panel.

- 1) Remove the four screws holding the operator cover in place. Lift the cover and set it aside.

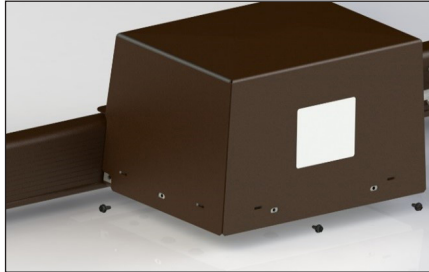


IMAGE 7

- 2) Remove both screws holding the defective power supply in place. The use of a *stubby* screwdriver might come in handy.



IMAGE 8

- 3) Disconnect the power supply wires (4):
 - a) Loosen both screws to disconnect the red and the black wires from the terminal block above the power supply (see image 9).
 - b) Disconnect the blue and the brown wires from the EMI filter (see image 9).

Note where the wires are connected to make it easier to reconnect them later on.

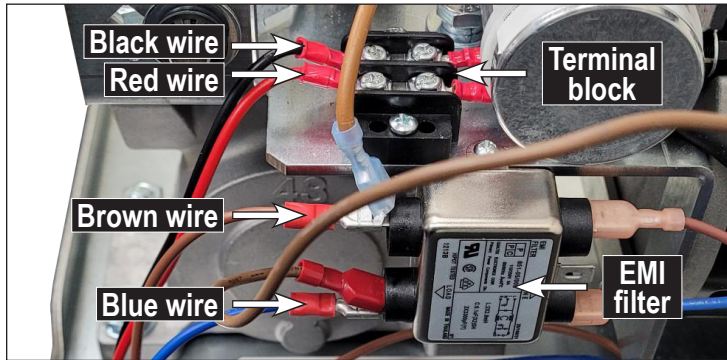


IMAGE 9

- 4) Discard the defective power supply and screws.

B- INSTALLING THE NEW POWER SUPPLY

- 1) Install the new power supply using the supplied double-sided tape, as using the previously removed screws might be difficult. Make sure it is aligned with the screw holes and that the blue and the brown wires are on the same side as the motor (see image 10).



IMAGE 10

- 2) Slightly bend the new power supply fork terminal connectors (black and red wires). Then, connect the four wires; 1 red and 1 black to the terminal block above the power supply, and 1 blue and 1 brown to the EMI filter (see image 9). Tighten both screws.

- 3) Connect the brown wire from the motor, and the brown wire from the key switch to the new power supply piggyback connectors.

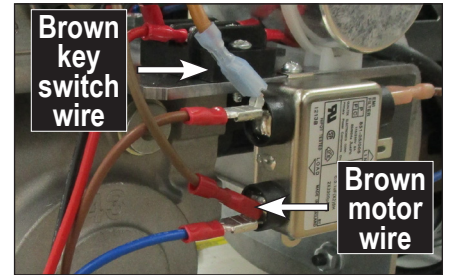


IMAGE 11

- 4) Place the cover back on the operator and secure in place with the previously removed screws (see image 7).
- 5) Put the power back on and the key in the key switch socket. Operate the spa cover normally to see if everything is correct. If there is any issue with the cover, please refer to the troubleshooting section of the Owner's manual or call Covana for the Technical Support department.